

Perfection
Has never been so close...

Are you ready?



Michelangelo Buonarroti was a great artist and sculptor who famously said "I saw the angel in the marble and carved until I set him free."

We are an Italian/Iranian brand that tries to make a bridge between the two cultures, the tastes of art, from the east and west by gathering their best architects, interior designers and tile experts.

Our designs are inspired by natural surfaces and textures, classic and contemporary arts, cultural symbols and latest trends. Our mission is to increase the standards of the market by producing innovative, high quality and elegant ceramic tiles to please our customers and make living spaces practical and elegant.

Michelangelo Buonarroti era un grande artista e scultore - che pronunciò una celebre frase: "ho visto un angelo nel blocco di marmo e l'ho scolpito fino a quando non è stato libero".

Angelo Ceramica nasce da una collaborazione italo-iraniana nel tentativo di costruire un ponte tra le due culture, cercando di cogliere il gusto dell'arte dall'est all'ovest radunando le migliori architetture, i migliori interior designers e le migliori esperienze ceramiche. I nostri design sono ispirati da superfici naturali, arti classiche e contemporane, dalle rispettive tradizioni culturali e dagli ultimi trend del mercato.

La nostra missione è elevare gli standard qualitativi del mercato, producendo in modo innovativo, con attenzione alla eleganza ceramica nel rispetto della migliore qualità possibile, in modo da soddisfare i nostri clienti per creare ambienti pratici ed eleganti.

APPLICATION



Floors & Stairs
Pavimenti e Scale



Shelve & Console
Ripiani e Console



Interior Design
Design di Interni



Sliding Walls
Pareti scorrevoli



Residential
Residenziale



Office
Ufficio



Shop & Malls
Negozio e centri
commerciali



Transportation
Trasporti



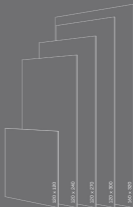
Restaurant
Ristorante



Hotel
Hotel

TechnoSLAB

The New Age Porcelain





The ideal raw material to create creations that raise the quality of life to the size of a masterpiece.

Ceramic slabs in the formats 120x120 and 120x240 and 120x300 and 140x310 cm, thickness 9mm, rectified, to build objects such as tops and backslashes for kitchens and bathrooms, worktops, tables, doors, floor and wall coating solutions without continuity, and other elements, even outdoors, with the possibility of detail, transversality and customization so far unthinkable. Level ensures the maximum degree of expressive freedom and is at the complete service of a design in step with the most current and innovative trends.

La materia prima ideale per realizzare creazioni che elevano la qualità della vita alle dimensioni di un capolavoro.

Lastre ceramiche nei formati 120x120 e 120x240 e 120x300 e 140x310 cm, spessore 9mm rettificato, per costruire oggetti come top e backslash per cucine e bagni, piani lavoro, tavoli, ante, soluzioni di rivestimento a pavimento e a parete senza soluzione di continuità, e altri elementi, anche outdoor, con possibilità di dettaglio, trasversalità e personalizzazione finora impensabili. Level assicura il massimo grado di libertà espressiva ed è al completo servizio di una progettazione al passo con le tendenze più attuali e innovative.

COLLECTIONS



GEMSTONE
38-41



WATERCOLOR
39-42



CALACATTA
20-27



TIFFANY
28-34



LIRICA
43-45



MONTE NEGRO
44-47



PRUSSANDRO
48-51



CAPOCORONA
52-55



VELLUTO
56-59



NAXOS GOLD
60-63



INDUSTRIA
64-67



LASA
68-71



RAFFAELLO
72-75



FILM BLUE
76-79



AMAZONE
80-83



MARQUINA
84-89



BETONITE
90-93



DEMETRIA
103-107



ELEGANT
108-111



DURANTE
112-115



MIRO
158-163



VOLAKAS
164-167



MISTERO
168-171



NUVALATO
172-175



ROCCIA
176-179



BAWCO NERO
180-183



STIMOLANTE
184-187



ROMANZO
188-191



WHITE HORSE
192-195



TERRAZZO
196-199



VENATO
180-183



STRA NERO
184-187



LEATHER
188-191



FUME BLUE
192-195



DETANTE
196-199



VALENTINO
236-239



EWOOD
242-245



LOFT GRAY
248-249



LABRADORITE
250-253



BELVEDERE
254-257



PALISSANDRO
262-265



VOLGA BLUE
266-269



RIVER STONE
270-273



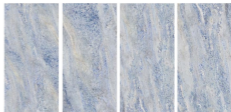
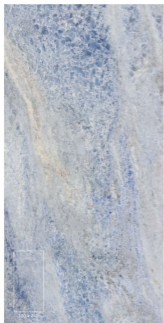
AMAZONITE
274-277



VELLUTO
282-285

120 x 240

GEMSTONE



GEMSTONE

120 X 240 - Polished - 2030



9 mm



Floor



Wall



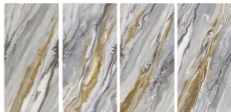
Certified



GEMSTONE

120 x 240cm - Polished

WATERCOLOR



WATERCOLOR

120 X 240 - Polished - 2010

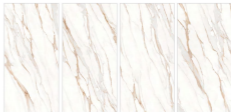


9 mm Floor Wall Decified



WATERCOLOR
120 x 240cm - Polished

CALACATTA GOLD



CALACATTA GOLD

120 X 240 - Polished - 4170



9 mm



Floor

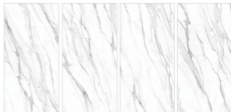


Wall



Certified

CALACATTA GREY



CALACATTA GREY

120 X 240 - Polished - 4171



9 mm



Floor



Wall

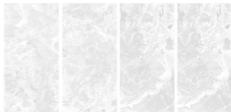


Certified



CALACATTA
120 x 240cm - Polished

TIFFANY SILVER



TIFFANY SILVER

120 X 240 - Polished - 4030

120 X 120 - Polished - 4030



9 mm



Floor

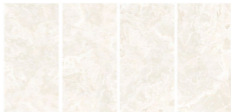
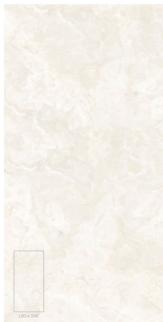


Wall



Rectified

TIFFANY GOLD



TIFFANY GOLD

120 X 240 - Polished - 4031

120 X 120 - Polished - 4031



9 mm



Floor



Wall



Rectified

TIFFANY GREY



TIFFANY GREY

120 X 240 - Polished - 4032

120 X 120 - Polished - 4032



9 mm



Floor

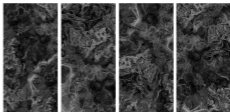
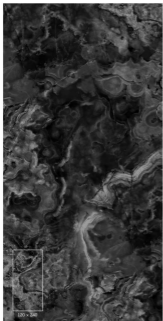


Wall



Rectified

TIFFANY BLACK



TIFFANY BLACK

120 X 240 - Polished - 4033

120 X 120 - Polished - 4033



9 mm



Floor



Wall



Rectified



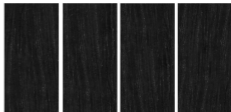
TIFFANY
120 x 240cm - Polished



TIFFANY

120 x 240cm - Polished

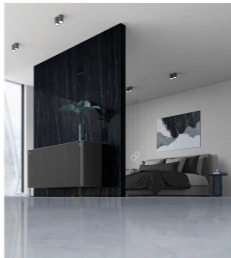
LAVICA



LAVICA

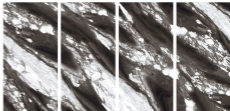
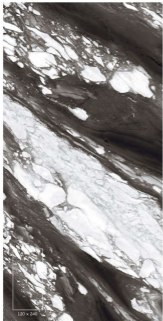
120 X 240 - Polished - 4020





LAVICA
120 x 240cm - Polished

MONTE NERO



MONTE NERO

120 X 240 - Matt - 4090

120 X 240 - Polished - 4091



9 mm



Floor



Wall

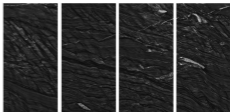
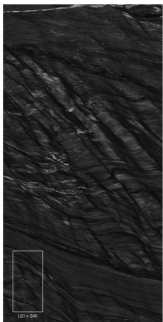


Rectified



MONTE NERO
120 x 240cm - Polished

PALISSANDRO



PALISSANDRO

120 X 240 - Polished - 4071



9 mm



Floor



Wall

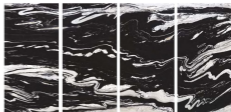
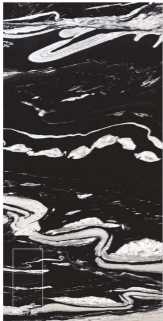


Certified



PALISSANDRO
120 x 240cm - Polished

CAPOCABANA



CAPOCABANA

120 X 240 - Matt - 4080

120 X 240 - Polished - 4081



9 mm



Floor



Wall



Rectified



CAPOCABANA
120 x 240cm - Polished

VELLUTO GREY



VELLUTO GREY

120 X 240 - Matt - 3041



9 mm



Floor



Wall

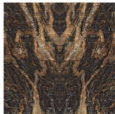
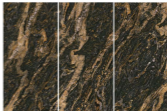
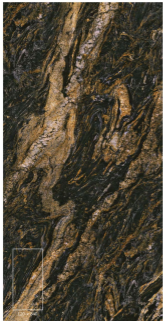


Certified



VELLUTO
120 x 240cm - Matt

MAGMA GOLD



MAGMA GOLD

120 X 240 - Polished - 4060

120 X 240 - Bookmatch - Polished - 4062



9 mm



Floor



Wall

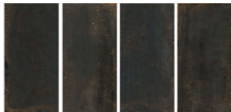


Rectified



MAGMA GOLD
120 x 240cm - Polished

INDUSTRIA

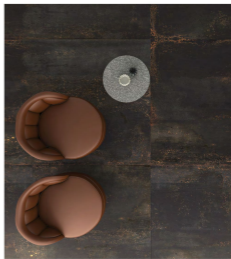


INDUSTRIA

120 X 240 - Matt - 3050

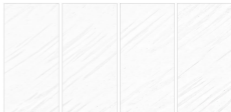
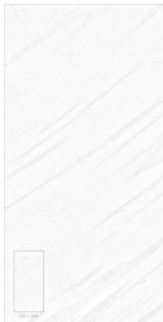


9 mm Floor Wall Decifed



INDUSTRIA
120 x 240cm - Matt

LASA



LASA

120 x 240 - Polished - 4050

120 x 120 - Polished - 4050

120 x 240 - Matt - 4050

120 x 120 - Matt - 4050



9 mm



Floor



Wall



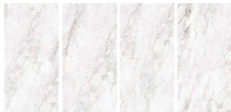
Rectified



LASA

120 x 240cm - Matt

RAFFAELLO



RAFFAELLO

120 X 240 - Polished - 4040

120 X 240 - Matt - 4041



9 mm



Floor



Wall

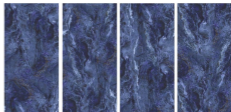
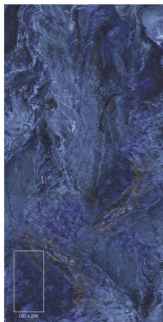


Rectified



RAFFAELLO
120 x 240cm - Polished

FIUME BLUE



FIUME BLUE

120 X 240 - Polished - 4130



9 mm



Floor



Wall



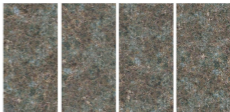
Certified



FIUME BLUE

120 x 240cm - Polished

AMAZONITE



AMAZONITE

120 X 240 - Matt - 4110



9 mm



Floor



Wall

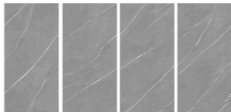
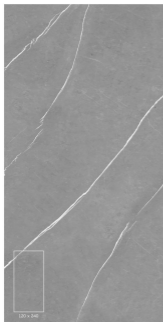


Certified



AMAZONITE
120 x 240cm - Matt

MARQUINA GREY



MARQUINA GREY

120 X 240 - Matt - 4140



9 mm



Floor

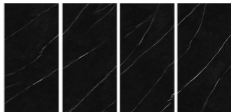
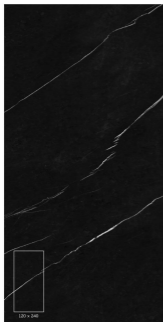


Wall



Certified

MARQUINA BLACK



MARQUINA BLACK

120 X 240 - Matt - 4150

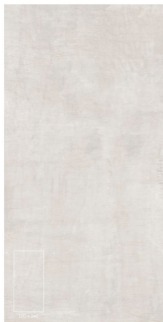


Tren Floor Wall Bath



MARQUINA
120 x 240cm - Matt

BETONITE LIGHT



BETONITE LIGHT

120 X 240 - Matt - 3020

120 X 120 - Matt - 3020



9 mm



Floor



Wall



Rectified

BETONITE GREY



BETONITE GREY

120 X 240 - Matt - 3021

120 X 120 - Matt - 3021



9 mm



Floor



Wall



Rectified

BETONITE DARK



BETONITE DARK

120 X 240 - Matt - 3022

120 X 120 - Matt - 3022



9 mm



Floor

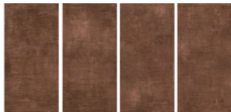


Wall



Rectified

BETONITE BRONZE



BETONITE BRONZE

120 X 240 - Matt - 3023

120 X 120 - Matt - 3023



9 mm



Floor



Wall



Rectified

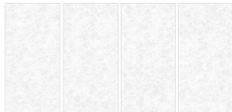
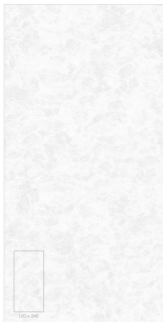


BETONITE
120 x 240cm - Matt



BETONITE
120 x 240cm - Matt

DEMETRIA LIGHT



DEMETRIA LIGHT

120 X 240 - Polished - 4010



DEMETRIA GREY



120 x 240



DEMETRIA GREY

120 X 240 - Polished - 4011



9 mm



Floor



Wall



Certified



DEMETRIA
120 x 240cm - Polished

ELEGANT



ELEGANT

120 X 240 - Polished -4021

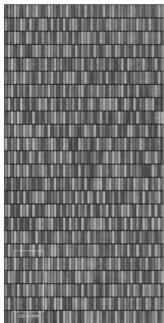




ELEGANT

120 x 240cm - Polished

DURANTE



120 x 240





DURANTE

120 X 240 - Matt - 2041



Shower pan



Floor

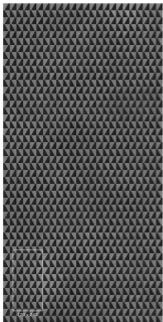


Wall



Bathtub

BIANCO NERO





BIANCO NERO

120 X 240 - Matt - 2040



9 mm

Floor

Wall

Rectified

STIMOLANTE





STIMOLANTE

120 X 240 - Matt - 2061



9 mm



Floor



Wall



Rectifloor

ROMANZO





ROMANZO

120 X 240 - Polished - 2052



Floor



Wall



Backrest

WHITE HORSE





WHITE HORSE

120 X 240 - MATT - 2060



Room



Floor

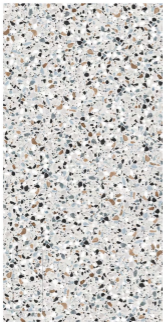


Wall



Bedroom

TERRAZZO



TERRAZZO

120 X 240 - Colorado-Matt - 2021

120 X 240 - Grey-Matt - 2022



5 mm



Floor



Wall



Rectified



TERRAZZO
120 x 240 cm - Matt

VALENTINO





VALENTINO

120 X 240 - Matt - 2020



9 rows

Floor

Wall

Rectifloor

120 x 270

EWOOD



120 x 270



EWOOD

120 X 270 - Matt - 7101



9 mm



Floor



Wall

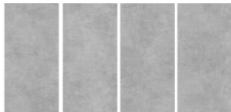


Bed/Mat



EWOOD
120 x 270cm - Matt

LOFT GREY



LOFT GREY

120 X 270 - Matt - 7103



9 mm



Floor



Wall

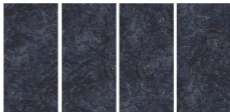


Certified



LOFT GREY
120 x 270cm - Matt

LABRADORITE



LABRADORITE

120 X 270 - Polished - 7202



9 mm Floor Wall Certified



LABRADORITE
120 x 270cm - Polished

BELVEDERE



BELVEDERE

120 X 270 - Polished - 7208



9 mm



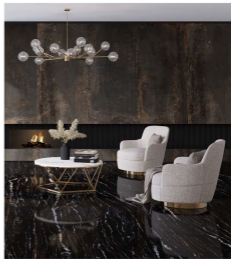
Floor



Wall



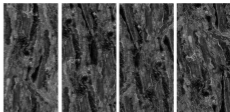
Certified



BELVEDERE

120 x 270cm - Polished

MORO BLACK



MORO BLACK

120 X 270 - Polished - 7203



9 mm



Floor

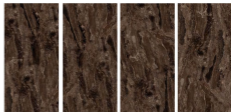


Wall



Certified

MORO BROWN



MORO BROWN

120 X 270 - Polished - 7204



9 mm



Floor



Wall

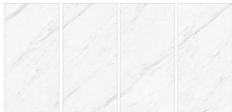


Certified



MORO
120 x 270cm - Polished

VOLAKAS



VOLAKAS

120 X 270 - Polished - 7205

120 X 270 - Matt - 7105



9mm



Floor



Wall



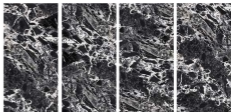
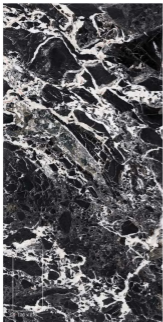
Rectified



VOLAKAS

120 x 270cm - Polished

MISTERO



MISTERO

120 X 270 - Polished - 7206



9 mm



Floor



Wall

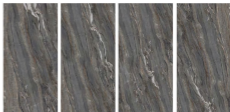


Certified



MISTERO
120 x 270cm - Polished

NUVALATO



NUVALATO

120 X 270 - Matt - 7106



9 mm



Floor



Wall

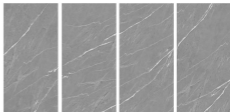
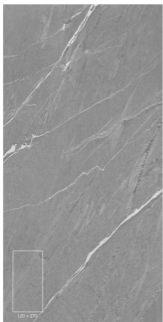


Certified



NUVALATO
120 x 270cm - Matt

ROCCIA



ROCCIA

120 X 270 - Matt- 7102





ROCCIA
120 x 270cm - Matt

VENATO



VENATO

120 X 270 - Matt - E7305

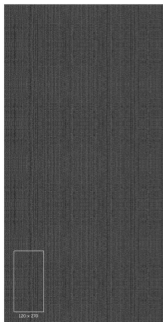


9 mm Floor Wall Decified

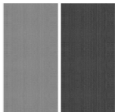


VENATO
120 x 270cm - Matt

STRIA NERO



120 x 270



STRIA NERO

120 X 270 - Black-Matt - E7301

120 X 270 - Grey-Matt - E7302



9 mm



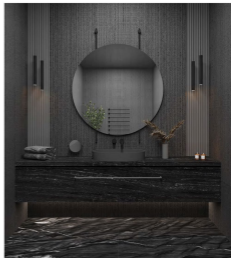
Floor



Wall



Rectified



STRIA NERO
120 x 270cm - Matt

LEATHER



120 x 270



LEATHER

120 X 270 - Black-Matt - E7303

120 X 270 - Grey-Matt - E7304



9mm



Floor



Wall



Rectified

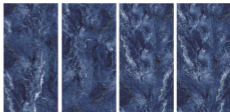


LEATHER

120 x 270cm - Matt

120 x 300

FIUME BLUE



FIUME BLUE

120 X 300 - Polished - 8130



9 mm



Floor



Wall



Certified

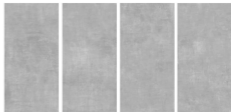


FIUME BLUE
120 x 300cm - Polished

BETONITE GREY



120 x 300



BETONITE GREY

120 X 300 - Matt - 7021



9 mm



Floor



Wall

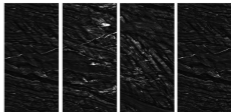
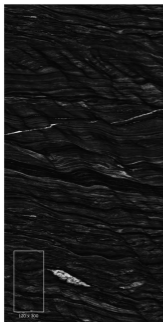


Certified



BETONITE
120 x 300cm - Matt

PALISSANDRO



PALISSANDRO

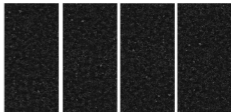
120 X 300 - Polished - 8071





PALISSANDRO
120 x 300cm - Polished

VOLGA BLUE



VOLGA BLUE

120 X 300 - Polished - 8072





VOLGA BLUE
120 x 300cm - Polished

RIVER STONE





RIVER STONE

120 X 800 - Matt - 9040



Wall

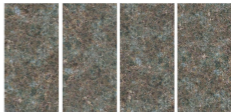
Floor

Wall

Bathtub

140 x 310

AMAZONITE



AMAZONITE

140 X 310 - Matt - 5111



9 mm



Floor



Wall



Certified



160 x 320

VELLUTO GREY



160 x 320



VELLUTO GREY

160 X 320 - Matt - 6041



9 mm



Floor



Wall

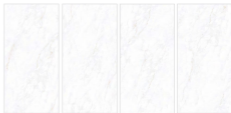


Certified



VELLUTO
160 x 320cm - Matt

RAFFAELLO



RAFFAELLO

160 X 320 - Polished - 5041



9 mm



Floor



Wall



Certified



RAFFAELLO
160 x 320cm - Polished

PRODUCTION

TECHNOLOGY

Angelo Ceramica tries to stay constantly updated on the best production techniques to create the design and configurations necessary to express the taste of ceramics. Quality and innovation represent for Angelo Ceramica an essential prerogative on which to base the choice of ceramic product in its design declarations. Therefore, we always try to be as up-to-date as possible on the best production techniques that allow us to achieve aesthetic and qualitative results in the best standards. Our technologies identify different types of applications:

GLAZED PORCELAIN

The resistance guaranteed by Glas porcelain link to the aesthetic possibilities offered by the new graphic and glazed application, put our product in the condition to perform at its best different styles to reproduce any kind of design in order to be updated and prospective with any trend.

DIGITAL TECHNOLOGY

Angelo Ceramica makes use of the best digital technologies on the market to always reach the highest aesthetic / quality levels in the ceramic field. The digitalization combined with the continuous research allows Angelo Ceramica a lot of accuracy in the search for the final face of the design and the best possible depth especially in the case of polished versions through the use of grits that allow greater depth and better detail as well as better quality performance.



PRODUZIONE

TECNOLOGIE

Angelo Ceramica cerca di rimanere costantemente aggiornato sulle tecniche produttive migliori per realizzare i design e le configurazioni necessarie ad esprimere il gusto della ceramica. La qualità e l'innovazione rappresentano per Angelo Ceramica una prerogativa inalienabile sulla quale basare la scelta del prodotto ceramico nelle sue dichiarazioni design. Cerchiamo quindi sempre di essere quanto più aggiornati possibile sulle tecniche produttive migliori che permettano di raggiungere risultati estetici e qualitativi nei migliori standard. Le nostre tecnologie individuano diversi tipi di applicazioni:

PORCELLANATO SMALTATO

La resistenza garantita dal porcellanato unito alle possibilità estetiche offerte dalle nuove applicazioni grafiche e di smaltatura, ci permettono di interpretare al meglio i diversi stili da riprodurre per design di ogni tipo in modo da essere propositivi e al passo con ogni trend.

TECNOLOGIA DIGITALE

Angelo Ceramica fa uso delle migliori tecnologie digitali in commercio per poter raggiungere sempre i più alti livelli estetici/qualitativi in ambito ceramico. La digitalizzazione unita alla ricerca continua permette ad Angelo Ceramica molta accuratezza nella ricerca del volto finale del design e la migliore profondità possibile soprattutto nel caso di versioni levigate attraverso l'utilizzo di graniglie che permettono maggiore profondità e miglior dettaglio nonché migliore resa qualitativa.



INSTALLATION

INSTALLATION

The success of a floor is due not only to the quality of the tiles, but to a whole set of elements (substrate, bonding layer, expansion joints, etc.) that constitute a real system. This is why the laying operations one to be considered as important as the choice of tile.

However, it is up to the designer to establish the correct application method of the tiles and the type of tile to be used, depending on the structure and the intended use of the decking.

The laying can be done either with cement mortar or with adhesives or adhesives. To proceed with the installation with adhesives it is necessary before proceeding to verify that the substrate possesses suitable characteristics for bonding the ceramic such as: stability and dimensional regularity, rigidity, absence of cracks, cleaning and surface integrity, absence of excess humidity and / or contaminants.

Before starting to lay any surface it is recommended to make sure that the amount of storehouse is adequate and sufficient for the quantity, tone and size required. Very important is the verification of the material before laying to check that the material itself does not present any defects or imperfections of any kind, since once the installation has been carried out the material cannot be object of dispute if the defect was evident before laying.

Then all the rules and precautions that are at the base of a correct execution of the work must be carried out (preparation of the substrate, preparation of the mortar or glue, restoration lines, positioning of expansion joints, etc.).

In large rooms it is absolutely necessary to position the expansion joints regularly (following the rules valid for interiors and exteriors). In smaller rooms it will be enough to maintain a slight detachment between the tiled area and the perimeter walls, with the care to insert slating boards for a suitable finish.

Avoid frost on the floor for at least 2/3 days after laying. In case of need, cover the floor properly to allow the passage without causing damage.

After laying, it is recommended to adequately protect the floor until the end of the site in order to avoid damage caused by abrasive substances or other harmful agents.

POZA IN OPERA

La scelta di un pavimento è dovuta non solo alla qualità delle piastrelle, ma a tutto un insieme di elementi (fondamenta, strato legante, giunti di dilatazione, ecc.) che costituiscono un vero e proprio sistema. Ecco perché le operazioni di posa sono da considerarsi importanti tanto quanto la scelta della piastrella.

È comunque compito del progettista stabilire, in funzione della struttura e della destinazione d'uso del piano di coperto, il corretto modo di applicazione della piastrella e il tipo di prodotto da utilizzare.

La posa può essere fatta sia con malta cementizia che con collanti o adesivi. Per procedere alla posa con adesivo è necessario prima di procedere, verificare che il supporto possieda idonee caratteristiche per l'accollaggio della ceramica quali: stabilità e regolarità dimensionale, rigidità, assenza di fessurazioni, pulizia e integrità superficiale, assenza di umidità in eccesso e/o di agenti contaminanti.

Prima di iniziare le operazioni di posa di una qualsiasi superficie si raccomanda di accertare che la portata di grès sia adeguata e sufficiente per quantità, tono e colore a quella necessaria. Molto importante è la verifica del materiale prima della posa per verificare che il materiale stesso non presenti difetti o imperfezioni di qualsiasi natura, poiché una volta proceduto con la posa il materiale non può essere oggetto di contestazione se il difetto era evidente prima della posa.

Si dovranno poi eseguire tutte le norme e le precauzioni che sono alla base di una corretta esecuzione dei lavori (preparazione del sottofondo, preparazione della malta o dei collanti, linea di restauro, posizionamento dei giunti di dilatazione, ecc.).

In ambienti di grandi dimensioni è assolutamente necessario posizionare i giunti di dilatazione con regolarità (secondo le norme valide per interni ed esterni). In ambienti più ridotti basterà mantenere un leggero stacco tra il piedistallo e i muri perimetrali con l'accortezza di inserire battiscopa per una finitura idonea.

Evitare il contatto sul pavimento per almeno 2/3 giorni dopo la posa. In caso di necessità coprire opportunamente con teli il pavimento per consentire il passaggio senza arrecare danni.

Successivamente alla posa si raccomanda di proteggere adeguatamente il pavimento sino al termine del cantiere in modo tale da evitare danni causati da sostanze abrasive o da altri agenti dannosi.

CLEANING TIPS

CLEANING TIPS

FIRST CLEANING

Its purpose is to eliminate all traces of grouting resulting from the closure of joints or joints. It is performed only once and before the use of the floor and must be performed after laying and before using the flooring.

1. sweep and clean the floor from any coarse dirt.
2. moisten the surface with water so that the joints are soaked with water so as to better protect them from the corrosive action of the acid component detergent.
3. spread the acid-based detergent on the surface diluted in the appropriate proportion with the water. Prevent the detergent from coming into contact with steel, aluminium or natural marble parts adjacent to the tiled floor.
4. let the detergent set for a suitable time in relation to the state of the floor and of the same time rule the most resistant dirt.
5. rinse thoroughly with water and immediately collect dirty water.

If the first cleaning is performed after the floor has already been used, then before carrying out the first cleaning, there it is necessary to remove with appropriate diluents (detergents) any existence of fatty substances or the like. In case the cleaning operation can be repeated.

NON-SLIP SURFACES

This type of rough or textured surface is more difficult to clean. After the tiles have been grouted, it is important to remove all excess material as soon as possible and to wash the surfaces repeatedly with a sponge and water until the finest residue has been eliminated.

After this, the surface can be cleaned with a single-brush cleaner and relative discs.

DIRTY CLEANING

Always use a neutral detergent that does not contain wax and will not deposit a glossy patina diluted in hot water for the daily cleaning operators and comply with the instructions on the package.

CONSIGLI PER LA PULIZIA

PRIMA PULIZIA

Ha lo scopo di eliminare ogni traccia di stuccatura conseguente alla chiusura dei giunti o fughe. Si esegue una sola volta e prima dell'utilizzo del pavimento e deve essere obbligatoriamente eseguita dopo la posa di questi e prima dell'uso della pavimentazione.

1. spazzare e pulire il pavimento da ogni eventuale sporcizia grossolana.
2. inumidire con acqua la superficie affinché le fughe vengano impregnate di acqua in modo da proteggere meglio dall'azione corrosiva del detergente a componenti acido.
3. stendere il detergente a base acida sulla superficie diluito nella idonea proporzione con l'acqua (secondo le indicazioni riportate) e lasciare agire. Evitare che il detergente venga a contatto con parti di acciaio, alluminio o metallo naturale adiacenti al pavimento posastuccato.
4. lavare ogni il detergente per un tempo idoneo in relazione allo stato del pavimento e nel contempo drenare lo spazio perimetrale.
5. spazzolare abbondantemente con acqua e raccogliere l'acqua sporca.

Se la prima pulizia viene eseguita dopo che il pavimento è già stato utilizzato, allora prima di effettuare la prima pulizia, allora è necessario rimuovere con appositi diluenti (detergenti) eventuali esistenze di sostanze grasse o simili. In caso l'operazione di pulizia può essere ripetuta.

PULIZIA ANTICHIOLA


Questo tipo di superficie, ruvida o strutturata, è più suscettibile di sporco. È importante dopo la stuccatura togliere tutti gli eccessi in breve tempo e con frequenza lavaggio usando spugna e acqua fino a rimuovere ogni minimo residuo. In seguito a fare lavaggio insondabile con acqua.

PULIZIA QUOTIDIANA

Effettuare la pulizia quotidiana sempre con detergenti neutri (che non contengono cere o non depositano patine lucide) diluiti in acqua calda, seguendo le indicazioni riportate sulle confezioni.

PRODUCT CERTIFICATION & DECLARATION OF PERFORMANCE
CERTIFICAZIONE DRL PROTETTORE & DICHIARAZIONE DI PRESTAZIONE

PACKING



Size	Thickness	kg/roll	kg/roll	Rolls/Pallet	kg/Pallet	kg/roll	Pallet Size
120 x 120	5	2.55	25	35	873	120	120x120x16
120 x 180	5	3.83	38	35	1335	180	120x180x16
140 x 120	5	3.24	32				
120 x 100	5	2.1	21	35	873	100	120x100x16

Technical Characteristic Caratteristica Tecnica	Standard Norma	Standard value valore Norma	Storage Value valore medio
 WEIGHT & WIDTH PESO E LARGHEZZA		1.05%	1.05%
 RECTANGULARITY RETTANGOLARITÀ	ISO 1040-1	+ 5%	+ 0.2%
 SHEET STRAIGHTNESS RETTINEZZA DEL LAY		1.05%	1.05%
 FLATNESS PIANITÀ		+ 0.5%	+ 0.3%
 ROLL ABSORPTION ASSORBIMENTO UGROSSA	ISO 1040-1	0.3 - 1.1 2%	Storage 0.2% Media 0.2%
 MODULUS OF RUPTURE (R _m) MODULO DI ROTTURA (R _m)	ISO 1040-4	+ 5% Min/1	Storage 3% Media 3%
 BONDING RESISTANCE RESISTENZA ALL'INCHIOSTRO	ISO 1040-1	Min 0	Min 0
 ADHESION RESISTANCE RESISTENZA ALLARRABBIARE	ISO 1040-1	1 - V	1 - 10
 THERMAL EXPANSION COEFFICIENT (EMT) COEFFICIENTE DI DILATAZIONE TERMICA (CDT-EMT)	ISO 1040-4	No Method Available Metodo non disponibile	Max. 17x10 ⁻² °C/1%
 THERMAL SHOCK RESISTANCE RESISTENZA ALLO SHOCK TERMICO	ISO 1040-9	Respect rispettare	In Compliance With The Requirements Inconformità non richiesta
 TENSILE RESISTANCE RESISTENZA IN TRAZIONE	ISO 1040-11	Respect rispettare	Method Available Metodo disponibile
 BOND RESISTANCE RESISTENZA ALL'INCHIOSTRO	ISO 1040-11	Respect rispettare	In Compliance With The Requirements Inconformità non richiesta
 DIMENSIONAL RESISTANCE RESISTENZA DIMENSIONALE	ISO 1040-13	Min. Class 0	Class 0/A
 CLASS RESISTANCE RESISTENZA ALLA MACCHIA	ISO 1040-14	Min. Class 1	Class 1
 FRICTION COEFFICIENT COEFFICIENTE D'ATTRITO	ISO 1040-17	Respect rispettare	



Office

Unit No 2 , 30 , South Shirazi , Mollasadra Av, Tehran ,Iran

Zip Code: 1435813854 , Telephone : +98 21 88041242 , +98 912 2261033

Showroom

No 114 , South Shirazi , Mollasadra Av, Tehran ,Iran

Zip Code: 1435854413 , Telephone : +98 21 88215075 , +98 912 1126456

www.angeloceramica.ir

www.instagram.com/michelangeloceramica

CONTACT

